

## INTERVIEWS

Trump campaign manager in spotlight on Bingham Island. **A2**



## 'OUR LITTLE JEWEL BOX'

Saks Fifth Avenue celebrates 90 years on the island. **A6**



## WHAT TO WEAR

Lilly garb sensational for Loggerhead Marinelife Center bash. **A6**

# Palm Beach Daily News

THE SHINY SHEET®

Established 1897

THE LEADER IN COVERING THE ISLAND



MONDAY, DECEMBER 19, 2016

6 Pages

\$2.00

## Businesses, officials excited as Flagler bridge opens

Traffic flows on span Sunday afternoon, ahead of schedule, with one lane in each direction.

By **KRISTINA WEBB**  
Daily News Staff Writer

It's a major milestone for one of the largest infrastructure projects to affect Palm Beach in decades: The Flagler Memorial Bridge opened to traffic Sunday afternoon, several hours ahead of schedule.

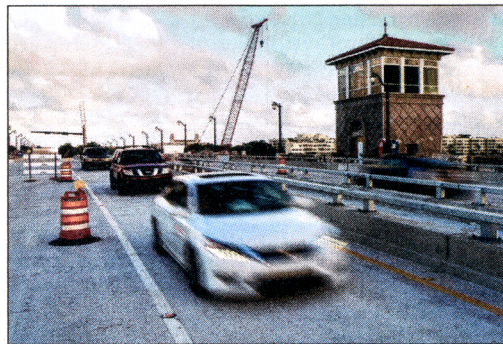
The first car to drive on the new span crossed around 12:45 p.m. Sunday, according to Florida Department of Transportation spokeswoman Angel Street-Gardner. The department had said the new bridge was set to open at 6 a.m. today.

One lane in each direction on the bridge carries

vehicles across the Intra-coastal between West Palm Beach and Palm Beach, marking the first time regular traffic has been allowed to travel across the fresh span. The south sidewalk on the bridge also will be open to pedestrians.

Both the old and new bridges were closed this

*Please see BRIDGE, Page A4*



Traffic flows over the newly opened Flagler Memorial Bridge in Palm Beach on Sunday afternoon. The bridge was to open at 6 a.m. today, but officials moved up the schedule to everyone's delight.

*Richard Graulich / Daily News*

## ACHIEVING HARMONY



Photos by Kim Sargent

The ark, in back, on the traditional east side of the room facing Jerusalem, combines grandeur with a hand-painted human touch, bringing it in essence "back to earth." The blue ceiling subtly evokes a celestial feel.

## Synagogue receives design award

By **BETTY NELANDER**  
Daily News Staff Writer

The sacred feel of religious architecture and design is in the spotlight for the annual global awards program of Faith & Form, the Interfaith Forum on Religion, Art and Architecture.

Among the 2016 honorees in the "International Awards Program for Religious Art & Architecture" is Palm Beach Synagogue, which earned recognition for liturgical interior design by New York-based ar-

chitect Arthur Chabon.

"Harmony between the earth-bound and the spiritual" was key to the sanctuary, he said.

Editor-in-chief Michael J. Crosbie recently announced the 28 winning projects.

He told the Huffington Post that evoking the divine through shapes and structures is challenging: "They have to provide space for a liturgical action, the collection

*Please see AWARD, Page A3*



This stair railing at Palm Beach Synagogue is a custom wrought-iron design with stars of David. Door handles also have small wrought-iron details where the handles connect to the door.

## Council eyeing extra money

Additional cent in sales tax can go toward infrastructure work.

By **WILLIAM KELLY**  
Daily News Staff Writer

Town officials are weighing their options before deciding how to spend an estimated \$500,000 a year — the town's share of the 1-cent increase in the county sales tax.

A 10-year plan to bury all utility lines in Palm Beach and the replacement of the aging town docks were both suggested as possible uses for the tax revenue during Tuesday's Town Council meeting.

"We are under no pressure to make a hard and fast decision at this point," Mayor Gail Coniglio said.

The council designated the town's Investment Advisory Committee as the citizens' oversight committee for the sales tax revenue. The oversight committee is required before the town can spend the money, which will start rolling in during February or March, Town Manager Tom Bradford said.

Voters in a Nov. 8 referendum agreed to raise the sales tax rate to 7 cents per

*Please see SALES TAX, Page A4*



**Coniglio**

Would like to see extra tax money go toward docks.



# AWARD

From Page A1

of a congregation in a place to worship, and for people to be in communion through the expression of faith."

The architect echoed those thoughts.

"What I love the most is that we were able to create an environment where people feel immediately comfortable and at home while still maintaining the dignity and grandeur so important in a house of worship," Chabon wrote in an email.

"I was very lucky to be able to work in the traditional, eclectic, Palm Beach Spanish/Moorish vocabulary that lends itself perfectly to this sensibility."

The awards panel included artist David Rocosalva, architect Vernon Mays, architect and

chairman Albert Lindeke, the Rev. Kristen Richardson-Frick and architect Julio Bermudez. They received 135 submissions this year.

"We are very honored for the Town of Palm Beach and the synagogue to get this recognition," Palm Beach Synagogue Rabbi Moshe Scheiner said.

Of the synagogue design, Scheiner said: "We wanted to connect with the Palm Beach and Florida feel of the lightness, the peacefulness and tranquility of Palm Beach. The terra-cotta tiles resemble the sand and the blue and white ceiling, the sky and heaven," evoking a celestial feel. The stained-glass windows have beautiful religious images on them."

"We also rotated the synagogue to face east toward Jerusalem, creating

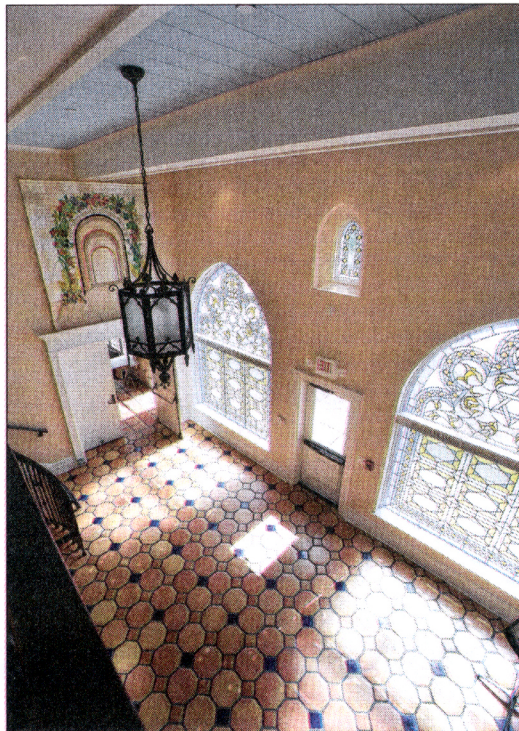
a spiritual, sacred oasis."

The renovation project, which united three buildings and was completed in 2011, gained the help of synagogue volunteers.

"Laura Munder and I worked together as a team to design the interior of the synagogue," said resident Nancy Richter, who led the synagogue's volunteer aesthetics committee and worked with building committee members Harris Fried and Rick Smith. "Personally, the windows are the most beautiful, unique and distinguished aspect of the building. The light catches the many facets of the etched glass to create a jewel box feeling from inside and out. The overall feeling in the sanctuary is serene and spiritual."

Scheiner said he is gratified. "We're pleased that we're able to attract worshipers around the world. They have such an uplifting experience when they come to pray at synagogue."

— bnelander@pbdailynews.com  
Twitter: @typecasters



Photos by Kim Sargent

Stained glass windows highlight the foyer, capturing a "beautiful defused pale-blue light," says architect Arnold Chabon. The repetition of the arches was key to unifying the rooms, establishing the architectural language of "eclectic Moorish architecture very much of Palm Beach." The ceiling light is from a local antiques store. "Everyone's involvement propelled the design level," Chabon says.

**TOWN OF PALM BEACH**  
Office of the Town Clerk

**NOTICE TO THE QUALIFIED VOTERS OF THE TOWN OF PALM BEACH**

You and each of you are hereby notified that a caucus of the qualified voters of the Town of Palm Beach, Palm Beach County, Florida, will be held in the Town Council Chambers of the Town Hall at 7:00 p.m. on Tuesday, the third day of January, A.D. 2017, for the purpose of nominating a Mayor and two council members (two-year terms), to be voted on at the general election to be held in the Town of Palm Beach on the first Tuesday after the first Monday in February (February 7, 2017), following the publication of this notice.

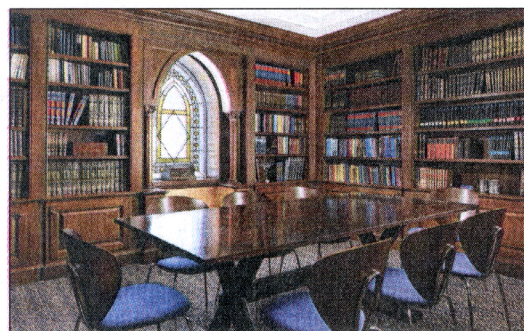
All qualified voters of the Town of Palm Beach are entitled to be present and to place in nomination such candidates as they desire. For a nomination to be effective it must be seconded twice, and all nominations and seconds thereto may be made only by qualified voters of the Town. Nominees must receive the signatures of 25 registered voters, as well as file additional documentation with the Town Clerk, by the end of the qualifying period, which is 5:00 p.m. on Wednesday, January 4, 2017.

PUBLISH: December 19, 2016  
Palm Beach  
Daily News December 26, 2016  
January 2, 2017

Susan A. Owens, MPA, MMC  
Town Clerk  
Town of Palm Beach

**THE ARTS**  
*The Shiny Sheet®* brings you complete coverage.

Subscribe today: (561) 820-4663  
[PalmBeachDailyNews.com](http://PalmBeachDailyNews.com)



**Above:** Stained glass and mahogany contrast in the Palm Beach Synagogue library, which is lined with sacred Jewish texts. The furnishings are little contemporary, giving it a homey feel.

**Left:** The terra cotta floor at Palm Beach Synagogue is a glazed waxed tile sourced locally with blue cabochons from Urban Archaeology in New York. The almost leathery finish is a classic finish for Spanish tile.

**There's Still Time!**

**1, 2 & 3 Day Delivery**

**We pick-up, pack, insure & ship anything any value anywhere!**

**FREE PICK-UP**

**R.SVP GLOBAL**  
M-F 9-6 • Sat 10-3  
[support@rsvpglb.com](mailto:support@rsvpglb.com)  
**561.659.9077**

277 Royal Poinciana Way  
Palm Beach, Florida

## HOLIDAY CLOSINGS

In observance of Christmas and New Year's, town offices and the recreation center will be closed Dec. 23, 26 and 30 and Jan. 2

Certain recreational facilities will be open, and beaches will have lifeguards on duty from 9 a.m. to 5 p.m.

### Dec. 23 to 26

- Par 3 Golf Course, open 7 a.m. to 6 p.m. (Closes at 3 p.m. on Dec. 24 and 25)
- Phipps Tennis Center, open 8 a.m. to 5 p.m. (Closes at 12:30 p.m. on Dec. 24 and 25)
- Seaview Tennis Center, open 7:30 a.m. to 8 p.m. (Closes at 12:30 p.m. on Dec. 24 and 25)
- Town Docks, open 8 a.m. to 5 p.m. (Office

closed on Dec. 25).

### Dec. 30 to Jan. 2

- Par 3 Golf Course, open 7 a.m. to 6 p.m. (Closes at 3 p.m. on Dec. 31 and Jan. 1)
  - Phipps Tennis Center, open 8 a.m. to 5 p.m. (Closes at 12:30 p.m. Dec. 31 and Jan. 1)
  - Seaview Tennis Center, open 7:30 a.m. to 8 p.m. (Closes at 12:30 p.m. Dec. 31 and Jan. 1)
  - Town Docks, open 8 a.m. to 5 p.m.
- Residential garbage and recycling**
- Residential and commercial services will run as usual Dec. 23, 26 and 30 and Jan. 2.
  - There will be no residential garbage or recycling pick up Dec. 24,

25 and 31 and Jan. 1.

- Commercial seven-day service will be serviced as usual on Dec. 24, 25 and 31 and Jan. 1.
- Residential yard trash:**
  - On Dec. 19, stash areas and Tuesday's route will be serviced.
  - On Dec. 20, Wednesday's route will be serviced.
  - On Dec. 21, Thursday's route will be serviced.
  - On Dec. 22, Friday's route will be serviced.
  - On Dec. 23, 24, 25 and 26, there will be no service.
  - Construction work and landscaping will be allowed Dec. 23, 26 and 30 and Jan. 2.
  - For more information, call the town manager's office at 838-5410.

## PALM BEACH SOCIETY

# Give the Gift of News

A Subscription to **Palm Beach Daily News** is The Gift That Keeps Giving **ALL YEAR LONG.**